

## A guide to implementing Maths-Whizz at home for parents and carers

Maths-Whizz is an online virtual maths tutor that can be accessed on any device, anywhere. It's just like having your own home tutor and is aligned to the 2014 UK National Curriculum up to the end of Year 8.

### How it works

The Tutor begins by diagnosing your child's knowledge gaps across several topics with an in-depth assessment and then automatically prepares a unique learning journey to address their specific gaps. Using your child's unique learning profile, Maths-Whizz's powerful Artificial Intelligence tailors teaching with engaging lessons that are perfectly matched to your child's needs. The Maths-Whizz tutor is mastery based, which means your child will progress forward in a topic only when they have demonstrated strong understanding of each concept. Through your Parent Dashboard, you can access live reports that keep you up-to-date on how your child is progressing.



### Adaptive learning journey

The tutor constantly assesses your child to ensure new topics are presented at the right time, every time.



### Interactive lessons

Engaging lessons that perfectly match both your child's ability and unique pace of learning.



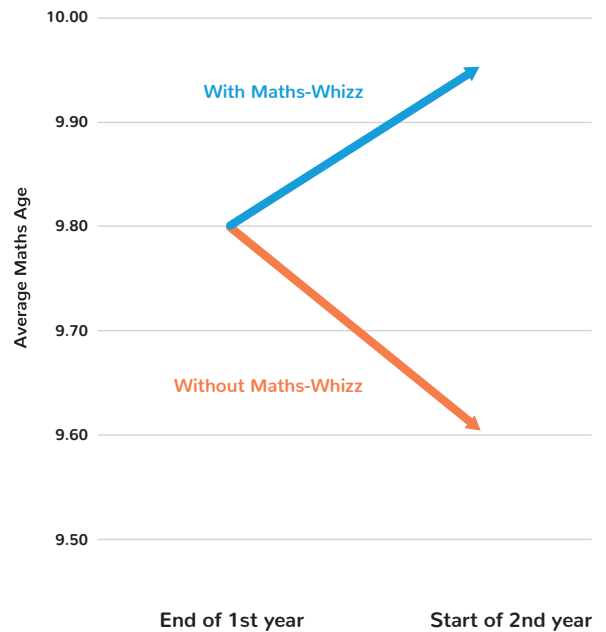
### Topic challenge

Fills knowledge gaps and builds confidence, by replaying exercises and refreshing knowledge.

## Why it matters

- To be successful in maths, students need a strong foundation in core knowledge and skills. Maths-Whizz uses powerful AI to tailor your child's learning plan based on their 'Maths Age', complementing the teaching and learning in school.
- Learning is a year-round activity and students who schedule in weekly use of Maths-Whizz outperform their peers by several months over the course of a year.
- The Maths-Whizz tutor keeps your child's skills and knowledge 'simmering' in a range of topics, and your child can consolidate lessons they have already completed through Topic Challenge.

## Learning progress with and without Maths-Whizz over the summer break



## How to get the most out of Maths-Whizz in your home



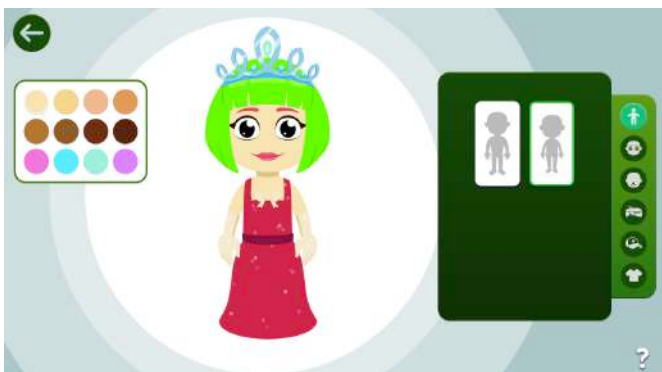
Students who spend an hour a week on Maths-Whizz typically gain 18 months' worth of maths knowledge in the first year. The key to success in maths is regular, focused practice throughout the year.

### Set a weekly schedule

- Set aside time each week so it becomes a routine. We advise between **30-90 minutes each week** depending on your child's specific goals and pace of learning.
- Our research shows that students learn best in small chunks: we suggest **sessions of up to 20 minutes at a time**.

### Maximise your child's focus

- Ensure the working space is conducive to learning with **no distractions** – that means no TV, siblings not interfering and no unscheduled breaks.
- Usage alone isn't enough: your child should also be making Progressions (a Progression basically means that your child has successfully completed a new learning objective). **Ensure your child earns at least 1 progression before logging out each time** – this will keep their learning focused and efficient and will prevent them from having to repeat lessons.
- Once your child has achieved 3 or more Progressions, they can consolidate learning by going to **Topic Challenge exercises**. Here they can redo lessons of their choice and try to beat their previous time or challenge their buddies.
- **Always have some paper and a pencil nearby**. Even though Maths-Whizz is an online Tutor, your child may want to use jottings to help answer the questions.
- **Make sure your child is answering every question**, even if they are unsure. It is better to have a go than exit the lesson early. Your child will make more progress this way and they will not have to repeat as many lessons (No-one likes having to do the same thing over and over!)



### Use rewards to motivate your child

- Your child should aim for at least **3 Progressions per week** (more if they are further behind in the curriculum), which will earn them a gem. Each gem improves your child's Maths-Whizz status: they can progress from Rookie to Superstar over a period of 8 consecutive weeks as a reward for their consistency.
- Your child can do lots of fun stuff in the Play Zone like spend their hard-earned credits. The Play Zone is unlocked when your child has earned 15 minutes of Usage in the session. If they have earned that week's gem, then the Play Zone remains unlocked for the rest of the week. Please note that the lock will be reset every Sunday at midnight (local time) regardless of when the Play Zone was unlocked. Access to the Play Zone is a reward: work hard and play hard!

## Monitor your child's progress



- Your child can monitor their progress in the different maths topics by viewing the topic badges. The dots represent years in the maths curriculum. It's worth reviewing this with them each week.
- Log in to your Parent Dashboard to check from a distance the progress your child is making. This could then inform a discussion you have with them about their learning. To set up your account, just log in to your child's account at [whizz.com/login](http://whizz.com/login), select 'Parents' from the menu and create your username and password.

## Coping with struggle

- **Confidence is key in maths – this is true of both children and adults. So even if you struggle a bit with maths yourself, be assured that the tutor is here to help.** Try to avoid saying things like 'I can't do maths' or 'I hated maths at school' because negative thoughts quickly affect children's own attitudes. It's okay for you and your child to get stuck on a maths lesson – it's how we get ourselves un-stuck that matters!

- Praise your child's effort so that they understand that hard work helps you to improve.
- If your child gets stuck, the tutor will provide prompts to support them. As tempting as it is, try to **NOT** give away the answers. It's better to get your child to talk the maths through with you and show you what they think they should do. See our '[Three steps to helping your child overcome struggle in maths](#)' guide at the end of this document.

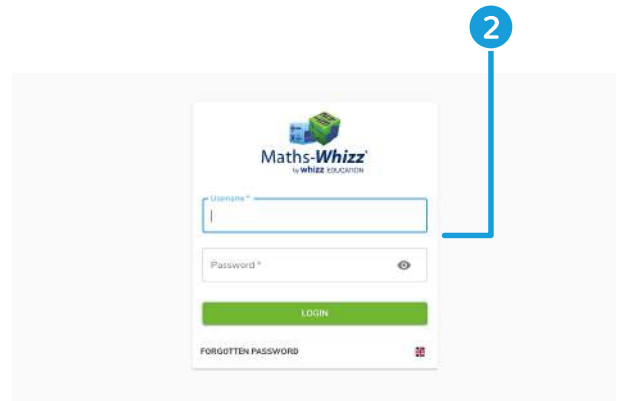
# Finally

If you have any problems then you have instant access to our Support Team.

You can do this by going to [whizz.com/help/contact-support](http://whizz.com/help/contact-support) or visiting our [parents FAQ pages](#).

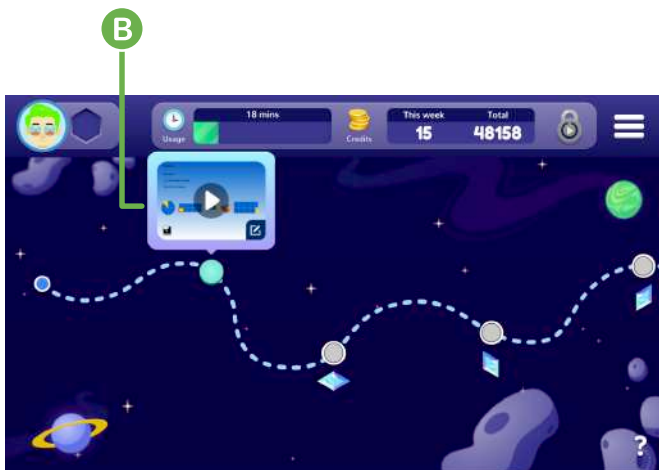
## How to log in to Maths-Whizz

- 1 Go to [www.whizz.com](http://www.whizz.com) and click 'login'.
- 2 Enter your username and password.



### Starting the Tutor

- A After logging in, you will see a summary of how many progressions (gems) have been earned over the past 8 weeks.
- B To start a lesson (and earn gems) students should launch the next exercise along their learning pathway.
- C The Maths-Whizz Tutor will introduce some new maths – students should follow the instructions so that they know what to do next.

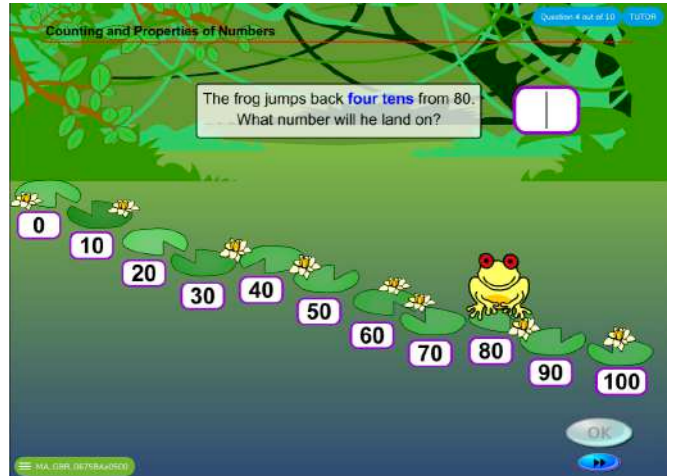


## Completing exercises and tests

Your child will have a chance to practice their maths by completing the interactive exercises. Most lessons are in three parts: a teaching section, exercise questions (approximately 10 questions) and finally a test (approximately 5 questions).

It is important that they attempt all questions, even if they are unsure of the answer.

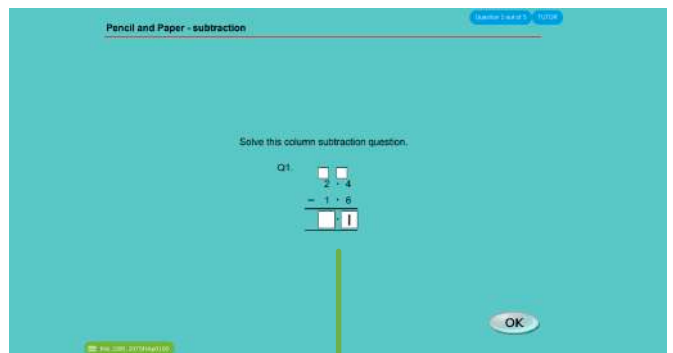
- A** If students are doing particularly well, they may be able to jump to the test activity. Look out for the highlighted double arrow.



**A**

To pass an exercise, students need to achieve at least 70% (7 out of 10). Sometimes they will be given the option of 'jumping' ahead to the test sooner when the Tutor feels they are ready.

- B** When this happens, students will then have a chance to show that they fully understand that area of maths, in a short test. The layout of the test is different to the exercises.



**B**

Encourage your child to focus fully on the test, and answer all questions.

To pass a test, and show an acceptable level of understanding, students need to score at least 60%.

- C** When students pass the exercise and the associated test, they will earn a Progression – 3 Progressions makes a gem!



**C**

## Technical requirements

Once you have a Maths-Whizz subscription, getting into the Tutor couldn't be easier. There's no app to install or additional set up, just visit [whizz.com](https://whizz.com) and log in.

To make sure your device and browser are up to date and compatible with Maths-Whizz, please read through our compatibility checklist.

---

### Internet browser



Chrome  
63+



Firefox  
61+



MS Edge  
15+



Samsung  
Internet 8+



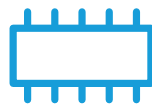
Safari  
11+

---

### Device and internet connection



Minimum 7.9" screen  
(recommended for  
usability reasons)



WebGL-enabled  
graphics card and  
browser 2GB RAM



0.5Mbps Internet  
connection (per  
concurrent student)

---

### Check your graphics card



To check the device has a WebGL enabled graphics card go to [doctor.whizz.com](https://doctor.whizz.com).

### Check your browser and operating system



To check the browser version and operating system go to [www.whatismybrowser.com](https://www.whatismybrowser.com) on the device.

## Three steps to helping your child overcome struggle in maths

### Level One: Self-help

Before asking for help, the child asks themselves a few questions. You could have this written or printed out for them to refer to.




### How to get myself 'unstuck'

- Have I read all the information?  
-
- Can I say what I have to do in my own words?  
-
- Have I written down any important information or numbers?  
-
- Will it help to draw a picture of the mathematics?

**If I have done all the above and I'm still stuck - I now need to ask the teacher**

### Level Two: Adult guidance

Discuss with your child what they are stuck on without giving away the answer.



### Possible questions to ask your child who is stuck on an exercise:

- What is the learning in the exercise?
- Which part are you struggling with?
- What do you think you need to do?
- What do you already know? Which are the key bits of information?
- How different is this to the last question you did?

### Level Three: Micro teaching

- Get your child to 'talk out loud' whilst they are working through an example with you.
- Come up with a different example to the questions in the exercise to work through together.

