



# Post 16 – Transition

## Introduction – Welcome to your Pathway



### Post 16 Pathway

Post 16 Pathway for any Young Person can provide so many questions and options, therefore VSK Advisory Team would like to offer you further advice, information and guidance to help support your decision making as you explore your options, and understand the array of choices available to you at each stage.

Where ? What?

When? Why?

How?



Whether you are thinking of continuing an academic route by returning to 6<sup>th</sup> Form at school (Years 12 & 13), attending a college course, or alternatively you would prefer to take a vocational route via traineeships and apprenticeships, VSK Advisory Team have prepared the following advice package to guide you.



**You have choices .....explore all options!**

**[P16 OPTIONS MADE SIMPLE.pdf](#)** provides a guide to qualification levels and access tiers to each next stage.

We appreciate that during your Key Stage 4 studies it may have been a challenging time for you, meeting expectations, researching options, decision making and arranging your next steps around your KS4 studies.

Taking part in work experience opportunities can be key to guiding you through your next steps

[Everything you need to know about work experience - Youtube Video](#)

[How to prepare for Work Experience - Youtube Video](#)

Should you be Year 10 preparing or Year 11 about to embark on your GCSE's, or have reached the end of your Year 11 studies and compulsory education, we hope you find this information useful to prepare for your Key Stage 5 and your Post 16 pathway ahead.

## Year 11

## Pathway

- Please note EHCP timelines will differ.

### September & October

- Attend Sixth Form & College open events
- Consider options. Vocational, Academic, Traineeship, Apprenticeship

### November

- Research your options. Seek impartial and practical advice
- Apply for popular College courses
- Revise for your mock exams

### December & January

- Sit your Mock Exams
- Ensure your selected college & 6<sup>th</sup> Form applications forms are submitted

### March & April

- Prepare your CV and attend invitations to interviews
- Create a revision plan around your GCSE Timetable

### August & September

- Collect your results.
- Confirm your Post 16 placement.
- Attend enrolment days.
- Apply for 16 – 19 yrs bursary.
- Celebrate your achievements!!
- Start your new Post 16 journey!

### June

- Complete your GCSE exams and feel proud of your achievements !!
- Apply for any chosen Apprenticeships

### May

- Start your GCSE Exams

### July

- Enjoy your well-deserved break.
- Reconsider the options and offers available to you to then make your formal decision in August





## Post 16 – Transition Steps Ahead



### Understanding Grades

[What qualification levels mean: England, Wales and Northern Ireland - GOV.UK](#)

[A guide to post-16 qualifications at level 3 and below for the 2025 to 2026 academic year](#)

[GCSE grades 2025: The 9-1 system boundaries explained - BBC News](#)

### Choices

[Choices after your GCSEs - How to decide what to do next](#)

[Kent Choices | Your Options After Year 11](#)

[Skills assessment | National Careers Service](#)

[How to advise students about GCSE choices | UCAS](#)

[Post 16 options - Kent County Council](#)

### Support Networks

[Mental health for children, teenagers and young adults - NHS](#)

[Post 16 transition support](#)

[Home - Kooth Student](#)

[Home - Moodspark](#)

[Kent Resilience Hub - Kent Resilience Hub](#)

### Information Movie Clips

[What next after GCSEs? Post 16 student options - Careers Education](#)

[Post 16 Option Choices after GCSEs /Year 11 – Kent](#)

[How to find and apply for an apprenticeship](#)

[Qualifications & Levels Explained - Post 16 Education Options #careers #education](#)

[Understanding Apprenticeships Assembly Film on Vimeo](#)





## Post 16 – Transition Decisions



### Careers Guidance:

- [Explore careers - icould](#)
- [Skills for Life: it all starts with skills | Skills for Careers](#)
- [Choosing Your Path](#)
- [Explore careers | National Careers Service](#)
- [Careers A to Z: Find your perfect job from Bitesize Careers - BBC Bitesize](#)
- [Careers in... - Careers - BBC Bitesize](#)
- [Careerpilot : Get information : Other support : Quizzes that match your skills and interests to jobs](#)
- [Careerpilot : Plan your future work & study](#)
- [Event Details - UK Creative Festival & Careers Fair](#)
- [Not Going To Uni - Search Opportunities](#)
- [readytoworkkent.co.uk](#)
- [Career Compass | Career Skills Workshops and Work Placements](#)
- [CXK Home - Career Advice, Training & Development](#)

### College Courses & T- Levels:

- [What qualification levels mean: England, Wales and Northern Ireland - GOV.UK](#)
- [T Levels | The Next Level Qualification](#)
- [Free courses | OpenLearn - Open University](#)
- [T Levels | Skills for Careers](#)
- [T Level subjects | T Levels](#)
- [Your training options | Skills for Careers](#)
- [Introduction of T Levels - GOV.UK](#)
- [Understanding T-levels in England: What they are and how they work - BBC Bitesize](#)

### Apprenticeships:

- [Become an apprentice](#)
- [Find an apprenticeship - GOV.UK](#)
- [Course Search - Employer Apprenticeship](#)
- [Amazing Apprenticeships | Explore Vocational Education & Apprenticeship Opportunities](#)
- [Provider Directory - Apprenticeship Hub](#)
- [Apprenticeships | Skills for Careers](#)
- [School Leaver Jobs | AllAboutSchoolLeavers](#)
- [Why apply for an Apprenticeship?](#)
- [The Advantages of Apprenticeships: A Guide for Parents and Carers](#)

### NEET:

- [NEET support - not in education, employment or training \(theeducationpeople.org\)](#)
- [KentChoices | I need help finding education, employment or training](#)
- [Home | Discover your skills and careers | National Careers Service](#)
- [Youth Employment UK | Home](#)

### Volunteering:

- [Volunteering - Kent County Council](#)
- [Volunteer | Futures Advice](#)
- [Volunteering guide for beginners - Save the Student](#)
- [Homepage - Kent Volunteers](#)



## Post 16 – Transition

### Open Day Events & Guidance



During Term 1 of the new academic year, Open Day events will become available to guide you around access to 6<sup>th</sup> forms, colleges and alternative provisions.

Whilst you explore your Post 16 options, we recommend that you continue to attend a variety of open event options, to provide you with a comprehensive view to support your decision making for your future pathway.

Please keep a watchful eye on all college and school websites of your choice for further Open Day event dates to be announced!

#### North Kent:

- [Career Information, Advice and Guidance - Involve Kent](#)
- [North Kent College - Further & Higher Education Courses In Kent](#)
- [Careers Information, Advice and Guidance](#)
- [Career Compass Tickets - 21st October 2025](#)

#### West Kent:

- [Careers and Progression - Ashford College](#)
- [Careers information, advice & guidance | MidKent College](#)
- [Career Compass Tickets - 21st October 2025](#)



#### East Kent:

- [UK Creative Festival & Careers Fair – 18<sup>th</sup> July 2025](#)
- [Career Compass Tickets - 21st October 2025](#)
- [Careers and Progression - Canterbury College](#)
- [College Life - Broadstairs College](#)
- [Careers and Progression - Broadstairs College](#)

#### South Kent:

- [Careers Guidance | Enterprise Learning Alliance](#)
- [Careers advice - job profiles, information and resources | National Careers Service](#)
- [Careers and Progression - Folkestone College](#)
- [Advice and Guidance - Folkestone College](#)
- [Career Compass Tickets - 21st October 2025](#)

[Event Details - Important Message For Year 11s When Attending College Open Days and Applying](#)

[Kent Choices Latest Events - Open Day Search](#)



## Post 16 – Transition

### Results day & Seeking further advice



- Thursday August 21<sup>st</sup> 2025

On results day, please do not fear should your grades be different from what you expected.

Providing you have an offer of placement at a provision you will need to contact the provision as soon as possible, so that you can discuss your options with them directly. Many provisions be it schools, colleges or vocational settings are familiar with facilitating changes, whereby they may be able to consider make adjustments, offer you another level of your chosen course, or guide you to make an alternative new application linked to your results and interests.

If you do not achieve a grade 4 or above in your GCSE English and/or Maths, it is recommended that you continue to study these subjects in KS5 until you have achieved an equivalent qualification. Your provision will be able to arrange for you to study these qualifications alongside your chosen course with your learning provider and this will be added to your timetable once you start your course.

- [Exam Results Helpline - What Do You Need To Know? \(VIDEO\)](#)

Should you require further guidance from VSK over the summer holiday period to talk about your choices, please complete our referral form below and include a summary of your enquiry:

[Contact the VSK Advisory Team - Referral Form](#)



Change of Mind ?      No Worries !

It's important to know that should your Year 10 or pre-exam plans already be prepared, it is ok to change your mind and share your thoughts with your family, friends and key staff to allow them to support your choices.

Below are some events which you can access to gain extra support to assist your decision making and any changes you may be considering.

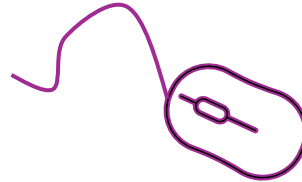
- [Event Details - Parent/Carer Podcast Episode 3 - Securing Your Future, Next Steps After Year 11](#)
- [Event Details - GCSE results drop in session](#) - Northfleet Family Hub, Gravesend - August 27, 2025 - 10am to midday
- [Post 16 options - Kent County Council](#)

The National Careers Service also has a great website for you to do some additional research on other opportunities available to you with links to an assessment where you can find out more about different career paths that may suit you. They can also offer direct phone support. Have a look at their website using this link

- [Careers advice - job profiles, information and resources | National Careers Service](#)



## Post 16 – Transition Enrolments



On receipt of your results in preparation for your September start, please remember to enrol in good time. Most learning providers will hold their enrolment events towards the end of August or the beginning of September. Please check their websites to make sure you know when the enrolment date is for your chosen provision.

Remember to take along all of the relevant paperwork with you such as your examination results, confirmation of your placement letter/email and if applicable a letter from your social worker to confirm your care status for a bursary assessment.

### **Bursary enrolment criteria:**

### **[16 to 19 Bursary Fund guidance - GOV.UK](#)**

A 'care leaver' is defined as:

- a young person aged 16 and 17 who was previously looked after for a period of 13 weeks consecutively (or periods amounting to 13 weeks), which began after the age of 14 and ended after the age of 16; or
- a young person aged 18 or above who was looked after prior to becoming 18 for a period of 13 weeks consecutively (or periods amounting to 13 weeks), which began after the age of 14 and ended after the age of 16

**In addition to the above please also enquire with your Post 16 provision around any internal bursaries they may offer linked to your placement.**

Enrolment can be a very busy time and seem a little chaotic but there will be support available at enrolments and you can contact VSK should you be concerned or unsure of the process.

If you have secured an apprenticeship or traineeship you will need to check with the provider for your official enrolment & start date.